

TURBINE**Vertical mixer**

The TURBINE model has been designed to mix products which need a low degree of shearing in applications requiring a homogenous result.

The high turning speed of the turbine generates the suction necessary to start the circulation of the liquid inside the vessel. Once drawn towards the turbine, part of the product is subjected to radial flow generated by shearing. The rest of the product is directed towards the bottom of the vessel, following the circulation generated by the axial flow.

The characteristics of this mixer prevent turnover of tank content before homogenising, mixing or dissolving. The design of the grooved body helps the pumping capacity of the mixer, achieving effective mixes in small and medium volumes without using baffles. Moreover, the anchoring system and mechanical sealing system means these units can be installed in nitrogen vessels with positive pressures and/or vacuum.

As a result, these units are ideal for homogenising, dispersing, suspending, mixing, crystallising and dissolving, and to improve heat exchange in the chemical, food, pharmaceutical and cosmetic industries.

Some examples of applications in which they can work are: preparation of mayonnaise, sauces, pickles, dissolving powdered food, additives, thickeners, preservatives, homogenisations, cosmetic creams, gels, etc.

MODELS

TURBINE 0.25 – 50
TURBINE 0.75 – 150
TURBINE 2.2 – 500
TURBINE 4 – 1000
TURBINE 7.5 – 1500
TURBINE 11 – 2000

CHARACTERISTICS

Mechanical seal W/W/V
IEC anchor flange
VORTEX turbine
Slotted channel body
Level of finish: Sanitary

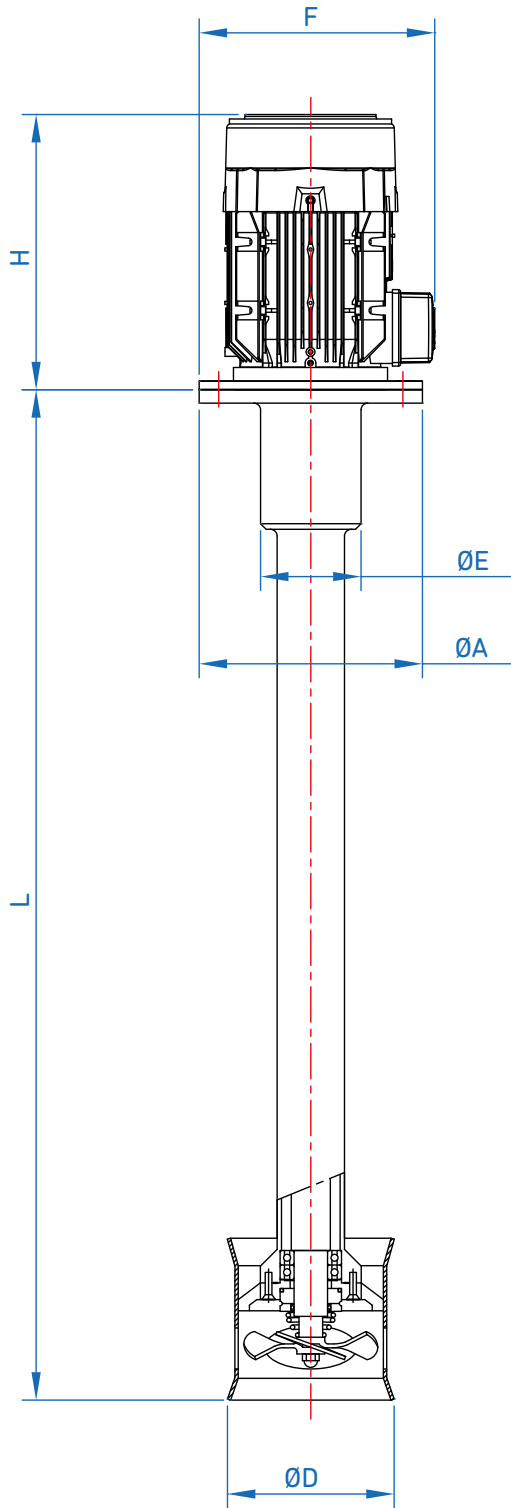
MATERIALS

Shaft and propeller in stainless steel AISI 316
Non-waterproof parts in stainless steel AISI 304

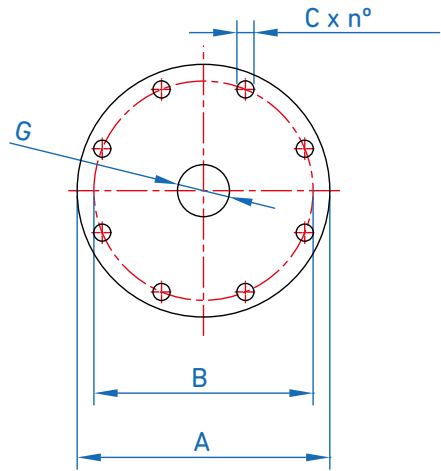
OPTIONS

Control panel
Frequency variator
Motor cover
Elevation system
Other anchor flanges
Pneumatic actuator
Headpiece and turbine in other materials

DIMENSIONS OF THE TURBINE MODEL

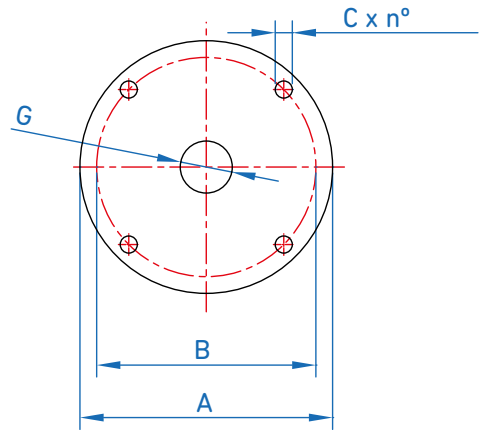


DIN 2576 PN10 FLANGE AGITATOR BASE



OVERALL DIMENSIONS						
MODEL		A	B	C	n°	G
TURBINE 0.25 - 50	DN125	250	210	18	8x45°	142
TURBINE 0.75 - 150	DN150	285	240	18	8x45°	170
TURBINE 1.5 - 500	DN150	285	240	18	8x45°	170
TURBINE 4 - 1000	DN200	340	295	22	8x45°	221
TURBINE 7.5 - 1500	DN250	395	350	22	12x30°	276
TURBINE 11 - 2000	DN300	445	400	22	12x30°	260

IEC FLANGE AGITATOR BASE



OVERALL DIMENSIONS						
MODEL	P (kW)	H	F	ØE	ØD	L
TURBINE 0.25 - 50	0.25	191	233	50	60	500
TURBINE 0.75 - 150	0.75	226	256	84	89	650
TURBINE 1.5 - 500	1.5	260	272	84	115	650
TURBINE 4 - 1000	4	333	307	84	141	800
TURBINE 7.5 - 1500	7.5	470	408	120	168	1000
TURBINE 11 - 2000	11	474	433	160	205	1200

OVERALL DIMENSIONS						
MODEL	FLANGE	A	B	C	n°	G
TURBINE 0.25 - 50	IEC 160	160	130	9	4x90°	110
TURBINE 0.75 - 150	IEC 200	200	165	11	4x90°	130
TURBINE 1.5 - 500	IEC 200	200	165	11	4x90°	130
TURBINE 4 - 1000	IEC 250	250	215	14	4x90°	180
TURBINE 7.5 - 1500	IEC 300	300	265	14	4x90°	230
TURBINE 11 - 2000	IEC 350	350	300	18	4x90°	250