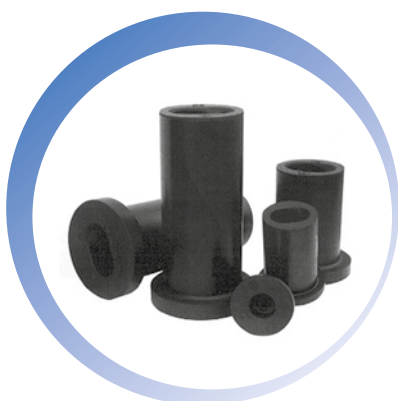
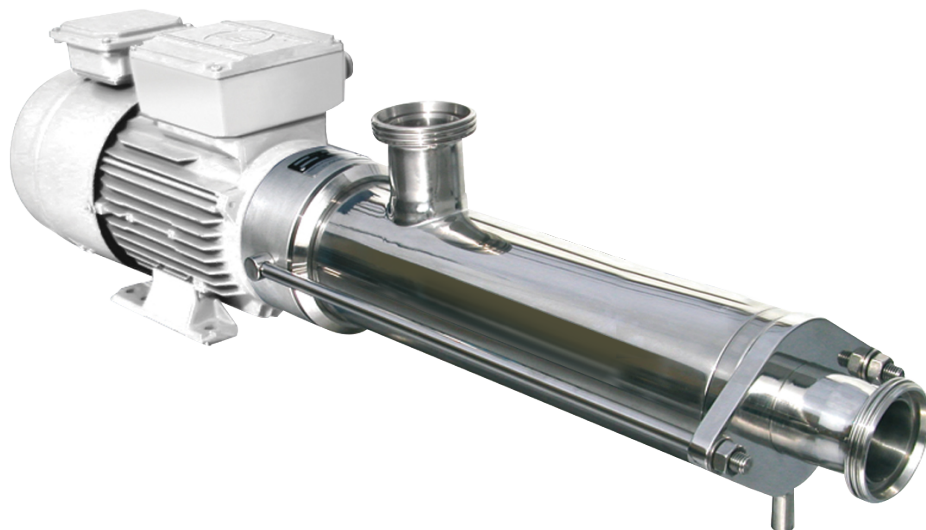


FL--EF

Screw pump with floating stator



APPLICATIONS

The FL--EF screw pumps are designed specifically for pumping fluids that require special care in handling like: wine, must, oil, juice, canned food, etc.

CHARACTERISTICS

BSP connections

Level of finish: Foodstuff / Industrial

MATERIALS

Parts in contact with product in SS AISI 316

Stator and gaskets in Nitrile

Mechanical seal C/C/N

OPTIONS

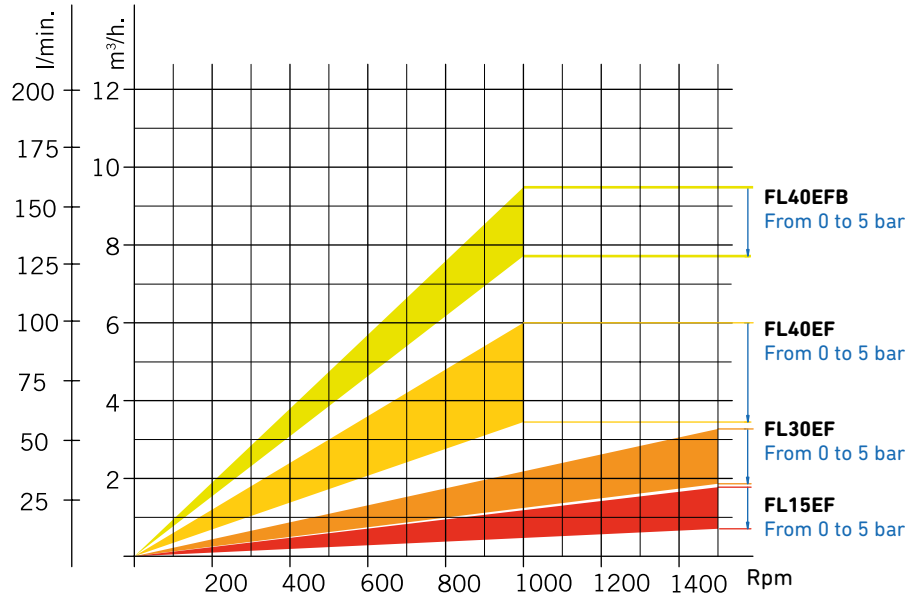
Other connections: DIN 11851, SMS, CLAMP, RJT, etc.

Mechanical adjustable speed disc drive

Trolley, platform

MODEL	kW	Speed (Rpm)	Max. height (m.w.c.)	Flow (m ³ /h)
FL15EF	0.25	1.500	50	0.3
FL30EF	0.75	1.500	50	2.5
FL40EF	1.1	1.000	50	3.8
FL40EFB	2.2	615	50	8.0

SELECTION ZONE



MODEL	A	B	D	E	H	H1	L	M	N	O	P	U
FL15EF	248	156	122	1" BSP	63	75	85	136	110	112	90	7
FL30EF	345	240	161	1 ¼" BSP	80	105	235	160	125	125	100	9.5
FL40EF	435	285	181	2" BSP	90	125	280	182	155	140	125	9.5
FL40EFB	500	370	181	2 ½" BSP	100	140	400	185	210	160	80	11

