

Versaline 3 piece stainless steel ball valve



Applications: For food and dairy.

Where there is a requirement for sanitary on/off full-bore valve. Abrasive products (the valve components can withstand passage of abrasive medium).

Operating conditions:

Pressure rating 1000 PSI (1000 WOG). PTFE seal (230°C max). Piggable.

Ordering information:

These valves can be supplied with a variety of pipe connection types. The connection components can also be supplied separately for the user to weld on. The common pipe connection types we stock are RJT, IDF, DIN, SMS, SMS Aseptic and Clamp. Please ask at the time of ordering.

These valves are Sanitary, not hygienic or suitable for CIP.

PIPE SIZE	CONNECTION Standard	CONNECTION				SEAL MATERIAL
1/2"	PLAIN ENDED VBAPE05/89	RJT	IDF	DIN	SMS	PTFE
3/4"	PLAIN ENDED VBAPE07/89	RJT	IDF	DIN	SMS	PTFE
1"	PLAIN ENDED VBAPE10/89	RJT VBARE10/89	IDF	DIN	SMS	PTFE
1.5"	PLAIN ENDED VBAPE15/89	RJT VBARE15/89	IDF	DIN	SMS	PTFE
2"	PLAIN ENDED VBAPE20/89	RJT VBARE20/89	IDF	DIN	SMS	PTFE
2.5"	PLAIN ENDED VBAPE25/89	RJT	IDF	DIN	SMS	PTFE
3"	PLAIN ENDED VBAPE30/89	RJT VBARE30/89	IDF	DIN	SMS	PTFE
4"	PLAIN ENDED VBAPE40/89	RJT VBARE40/89	IDF	DIN	SMS	PTFE

Also available: tri-clamp ends, flanged ends (PN16, ASA150, Table)

Versaline 3 piece ball valve features & advantages

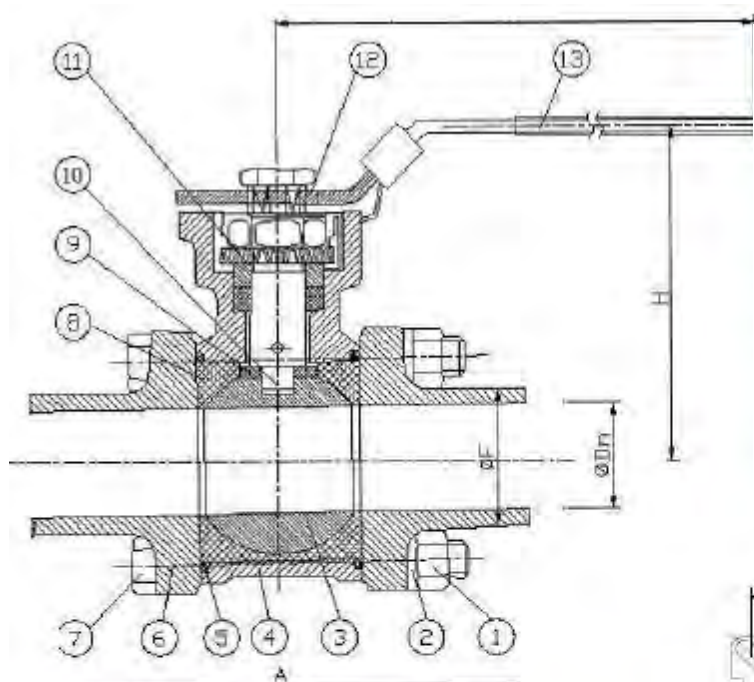
- Full bore opening.
- To enable left/right hand opening simply remove the Allen screw (shown top right of the image) and refit in the opposite hole. (Note: not the diagonally opposite hole).
- Integral handle locking device.



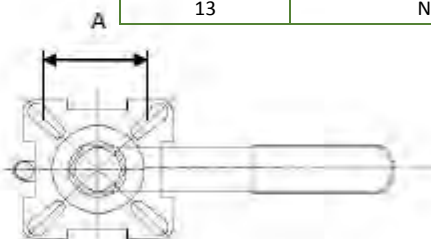
- Integral handle locking device.
- 3 piece body construction (to enable inlet ends to be removed for purposes).
- Internal PTFE encapsulated seal.



Versaline 3 piece ball valve technical data



NUMBER	DESCRIPTION
1	Nut
2	Washer
3	Ball
4	Body
5	Gasket
6	Cap
7	Bolt
8	Ball Seat
9	Thrust Washer
10	Stem
11	Belleville Washer
12	Handle
13	Needle Sleeve



ISO pad. (F5)

Measurement A (PCD)

1/2" and 3/4" valve sizes	40mm
1" valve size	45mm
1.5" valve size	60mm
2" valve size	65mm
2.5", 3" and 4" valve sizes	90mm

SIZE	Dn	A	H	F	J	Square Shaft Size (MM)	Torque (Nm)
1/2"	9.7	89.4	57	12.7	57	9 x 9	15
3/4"	16	100.5	66	19.05	66	9 x 9	15
1"	22.4	114.5	85	25.4	85	11 x 11	20
1 x 1/2"	35.1	137.5	116	38.1	116	14 x 14	30
2"	47.8	156.0	125	50.8	125	14 x 14	35
2 x 1/2"	59.5	183.0	150	63.5	150	14 x 14	45
3"	72.2	200.0	150	76.2	150	17 x 17	60
4"	97.6	240.0	160.0	101.6	160	17 x 17	70